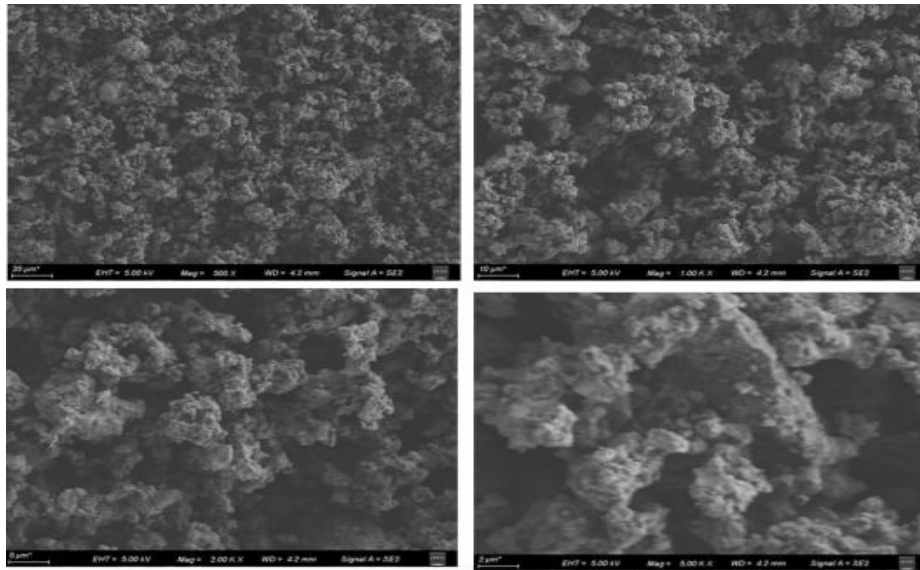


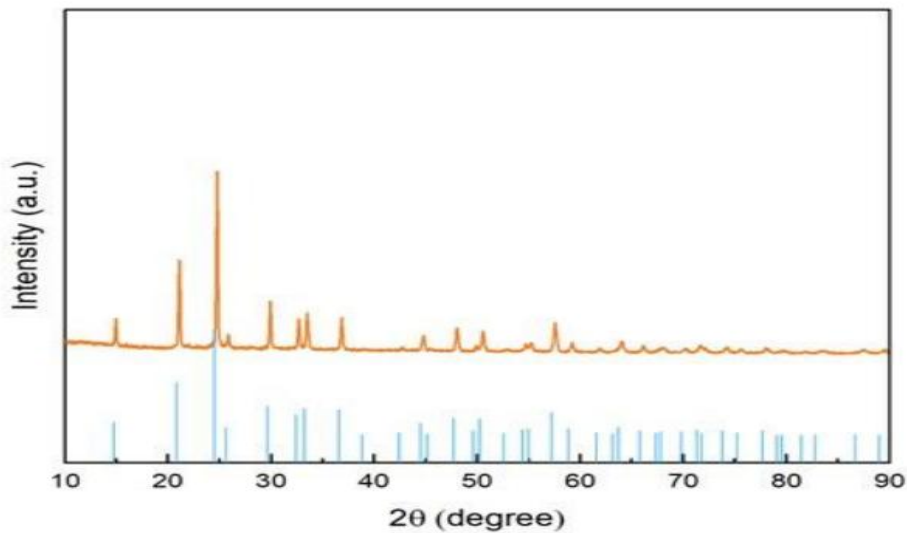
Li_{1.3}Al_{0.3}Ti_{1.7}(PO₄)₃ 氧化物固态电解质**1 技术参数 (Specification)**

产品 Product	Li _{1.3} Al _{0.3} Ti _{1.7} (PO ₄) ₃ (LATP) 固态电解质 LATP solid electrolyte
牌号 ID	SZBSE002-3
直径 Diameter	~1 μm
离子导率 Ionic conductivity	>0.3 mS/cm (冷压@27°C)
元素含量 (%) element content	Li 2.4±0.2, Al 2.1±0.2, Ti 21.2±1.8, P 24.2±1.5
外观 Appearance	白色粉末, 无结块, 无异物 White powder, no caking, no foreign matter

2 表征测试 (Characterizations)



SEM

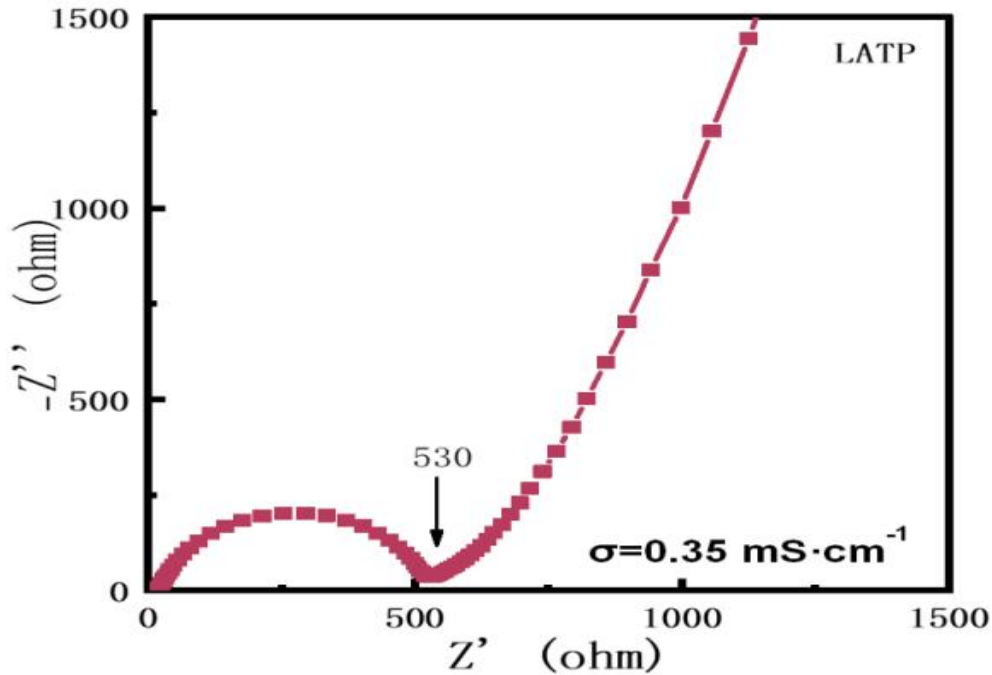


XRD

南京苏展智能科技有限公司
地址: 南京市栖霞区广月路 30 号十月科创园 S06 栋南京邮电
大学国家大学科技园
邮编: 210033
电话 Tel: 13801599205

Nanjing Suzhan Smart Tech Co.,Ltd
Add: Nanjing City Jiangsu Province China

Zip: for 210033
E-mail: cmsuzhan@126.com
[Http://www.cnsuzhan.com](http://www.cnsuzhan.com)



离子电导率
Ionic conductivity

3 应用领域 (Application Fields)

应用于正极材料添加剂、正极材料改性、隔膜涂覆等锂离子电池中，有效提升电化学性能与安全性。

It can be used in lithium ion batteries such as positive electrode material additive, positive electrode material modification, diaphragm coating, etc., effectively improve electrochemical performance and safety.

4 储存条件(Storage Conditions)

贮存在环境温度为 $-20^{\circ}\text{C}\sim 35^{\circ}\text{C}$ ，相对湿度不大于75%的清洁、干燥、通风的室内，本产品的保质期半年。

Stored in a clean, dry and ventilated room where the ambient temperature is $-20^{\circ}\text{C}\sim 35^{\circ}\text{C}$ and the relative humidity is not more than 75%, the shelf life of this product is half a year.

5 使用须知 (Terms and Conditions)

本品应避免与腐蚀性物质接触，密封袋开启后建议一星期内使用完毕；因各电池工艺不同，使用该材料制作的电池性能可能会有差异，所提供的电性能数据仅作参考。

This product should avoid contact with corrosive substances, sealing bag opening gold is recommended to be used within one week; Due to different battery processes, the performance of

南京苏展智能科技有限公司
地址：南京市栖霞区广月路30号十月科创园S06栋南京邮电
大学国家大学科技园
邮编：210033
电话 Tel: 13801599205

Nanjing Suzhan Smart Tech Co.,Ltd
Add: Nanjing City Jiangsu Province China
Zip: for 210033
E-mail: cmsuzhan@126.com
[Http://www.cnsuzhan.com](http://www.cnsuzhan.com)



南京苏展智能科技有限公司

batteries made of this material may be different, and the electrical performance data provided is for reference only.

声明：我司保证技术报告中的信息的准确性，但不保证材料的普适性，也不负责由此导致的任何损失。提供的参数为统计数据，允许少量浮动。且我司提供的技术报告都是面向所有客户，报告中的表征图片请勿擅自截图使用。

Disclaimer: SUZHAN LLC believes that the information in this Technical Data Sheet is accurate and represents the best and most current information available to us. SUZHAN Material makes no representations or warranties either express or implied, regarding the suitability of the material for any purpose or the accuracy of the information contained within this document. Accordingly, SUZHAN Material will not be responsible for damages resulting from use of or reliance upon this information. Please do not use screen shots of any characteristic graphs in this report without permission.

10/27/2023Ed



南京苏展智能科技有限公司
地址：南京市栖霞区广月路 30 号十月科创园 S06 栋南京邮电
大学国家大学科技园
邮编：210033
电话 **Tel:** 13801599205

Nanjing Suzhan Smart Tech Co.,Ltd
Add: Nanjing City Jiangsu Province China
Zip: for 210033
E-mail: cnsuzhan@126.com
[Http://www.cnsuzhan.com](http://www.cnsuzhan.com)